



 **ENERGY SAVING**

 **SELF-REINSERTING**

 **FAST and SAFE**

OPENING SPEED
up to 3 m/s



Ditec Sector Reset

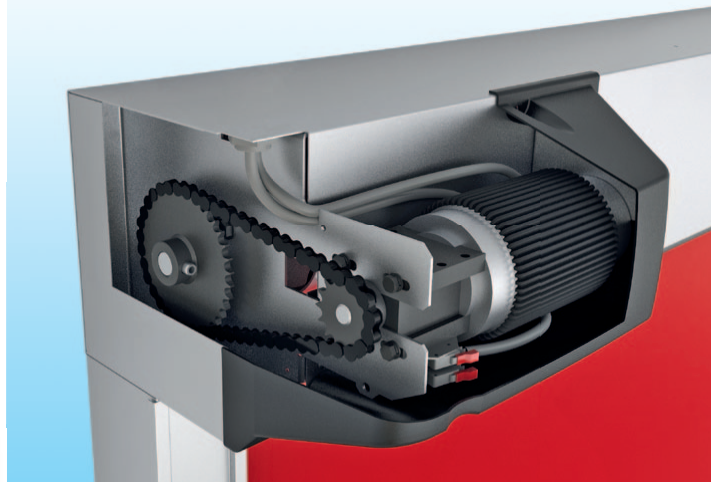
The best in efficiency and safety

EN

Ditec Sector Reset

When maximum operational efficiency is needed, together with the highest level of safety, **Ditec Sector Reset** is the most reliable high performance door.

General very good seal level and highest operating speed, for energy saving and a better quality of the environment.



ENERGY SAVING

The tightness of the seal is secured by the side zippers running into self-lubricating polyzene guides; this minimizes infiltration of air, dust and draughts.

The very high speed of Ditec Sector Reset drastically reduces the opening and closing cycle to keep constant temperatures and save energy costs.

SAFETY

Soft and deformable curtain and bottom edge, without any rigid element, cannot hurt people nor damage fragile goods even in case of accidental impact.

Reopening in case of obstacle detection is always secured by SLE – Safety Linear Encoder which is the most accurate and sensitive safety device (Ditec patent).

SELF-REINSERTING

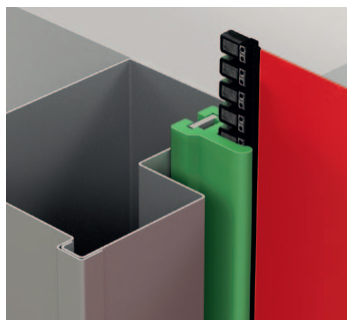
Self-reinserting function of the curtain after accidental crashes ensures continuous door operation and minimizes downtime; in case of curtain break-away caused by an accidental collision during the crossing of the door, **the system automatically resets the curtain and normal operation of the high performance door.**

PANIC-FREE EMERGENCY RE-OPENING

Safety is secured in any emergency situation to allow **fast evacuation**; even in case of power failure the user friendly semi-automatic system connected to the counterweights guarantees the fast and safe re-opening of the door.

Another exclusive feature is the red handle available on both sides of the doorway allowing bi-directional evacuation.

It is also available with **an emergency exit** integrated into the flexible curtain.



TECHNICAL CHARACTERISTICS

Max size

PL 6000 x PH 5000 mm

Steel frame

Standard supply in hot galvanized steel and available also in stainless steel AISI 304 or powder coated

Opening speed

- Up to 3 m/s with 230 V single phase with **INVERTERmotion**, with different and adjustable opening and closing speeds
- 1,0 m/s with 400 V three-phase

Wind load resistance

- Up to class 2

Gear motor

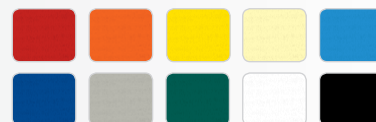
K10 for very heavy duty; built-in

Control unit

Complete of membrane push buttons – open/partial opening/ close/stop - with signaling led. SBS - Step by step closing function in case of unexpected wind pressure

Flexible curtain

Standard colours (others upon request)



Entrematic Italy S.p.A.

Via Mons. Banfi, 3 • 21042 Caronno P.la (VA) • Italy

Tel +39 02 963911 • Fax: +39 02 9650314

ditec@entrematic.com

www.ditecentrematic.com • www.entrematic.com

Cod. A000B - 08/2015

Ditec Sector Reset

gdp milano 158065