

 **COMPACT**

 **SAFE**

 **RELIABLE**

**OPENING  
SPEED  
up to 1.3 m/s**



## **Ditec Traffic C/CM**

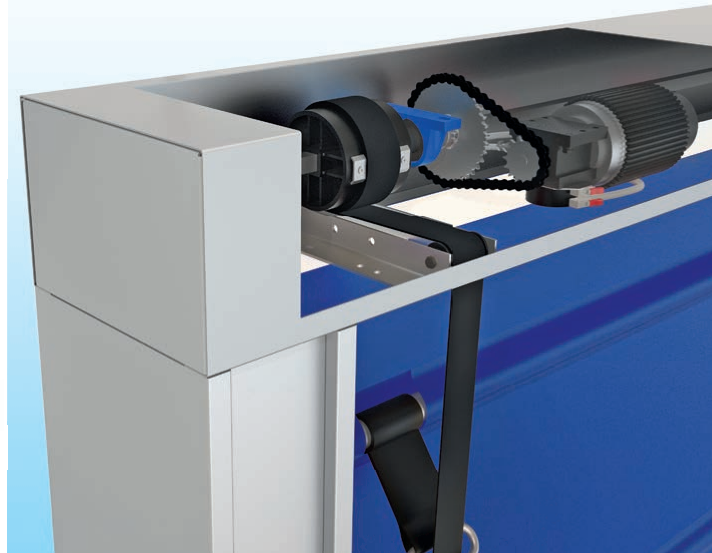
The safe fold-up door

EN

# Ditec Traffic C/CM

The **Ditec Traffic C/CM** rapid folding doors are particularly versatile and safe. They are recommended in particular for medium and large-scale applications.

Normal or extreme environment conditions are not a problem with Ditec Traffic C/CM, both inside or outside applications, always at very low maintenance level.



## COMPACT AND SPACE SAVING

The galvanized self-supporting steel frame is very compact and designed as built-in; **it allows installation even in limited side spaces of the doorway ensuring at the same time higher protection and very good looks.**

The drive unit is integrated and protected avoiding usual bulky side motors, often directly exposed to the weather conditions.

## WIND RESISTANT

Flexible curtain is equipped with robust horizontal reinforcements in steel or aluminum which ensure high resistance to wind load pressure.

**Special modular curtain - original Ditec design for Ditec Traffic C - offers interchangeable and widest transparent sections**, the most suitable for higher brightness, visibility and safety.

## SUPERIOR TECHNOLOGIES

Very reliable operating systems, the only available in both technologies:

- 400 V three-phase with single speed and basic settings
- **230 V with INVERTERmotion for higher speed - opening up to 1.3 m/s and closing up to 0.8 m/s - soft start and stop, lower impact force while closing Ditec Traffic C.**

The extreme simplicity and rationality of components of Ditec Traffic C/CM make sure that it will work in any condition and not requiring particular maintenance.

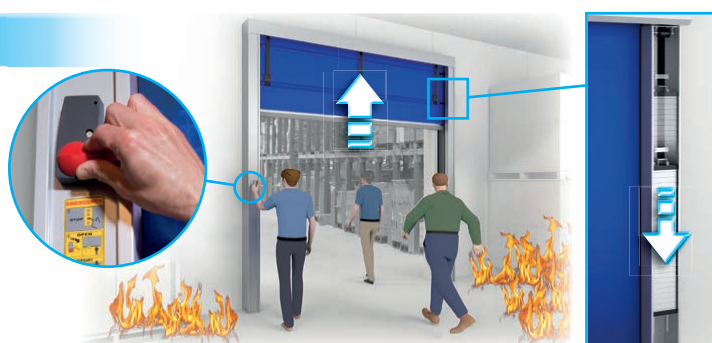


## PANIC-FREE EMERGENCY DEVICE

Safety is secured in any emergency situation to allow **fast evacuation**; even in case of power failure the user friendly semi-automatic system connected to the counterweights guarantees the fast and safe re-opening of the door.

Another exclusive feature is the red handle available on both sides of the doorway allowing bi-directional evacuation.

Availability of emergency fully automatic or back-up power supply.



## TECHNICAL CHARACTERISTICS

### Max size

**Traffic C:** PL 6000 x PH 6000 mm  
**Traffic CM:** PL 11000 x PH 7000 mm

### Steel frame

Standard supply in hot galvanized steel and available also in powder coated

### Opening speed

- Up to 1.3 m/s with 230 V single phase with INVERTERmotion, with different and adjustable opening and closing speeds
- 1.0 m/s with 400 V three-phase (0.7 m/s > 4500 x PH 4500)

### Wind load resistance

- Up to class 2

### Gear motor

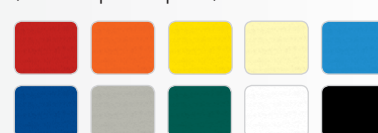
K10 for very heavy duty; built-in

### Control unit

Complete of membrane push buttons - open/partial opening/ close/stop - with signaling led

### Flexible full or modular curtain

Standard colours (others upon request)



### Entrematic Italy S.p.A.

Via Mons. Banfi, 3 • 21042 Caronno P.la (VA) • Italy  
Tel +39 02 963911 • Fax: +39 02 9650314  
ditec@entrematic.com  
www.ditecentrematic.com • www.entrematic.com

Cod. A206B - 11/2015  
Ditec Traffic C/CM  
gdp milano 163165